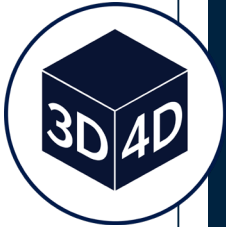


Features and Terminology



DECOMPRESSION

Spinal correction and the decompression stretch help relieve pressure on the spinal cord.



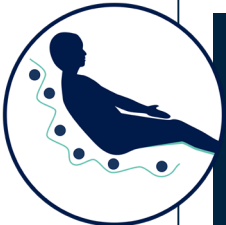
3D/4D MASSAGE

Advanced 3D/4D back massage mimics deep-tissue massage of human hands to target the inner layers of muscles and connective tissues.



REFLEXOLOGY

Our total sole reflexology massage, especially when combined with compression massage, improves your lymphatic functionality, to help your body operate at peak efficiency.



FULL BODY MASSAGE

Full-body compression massage lets you experience a total body experience from head to toe — including hands, glutes and calves.



BODY SCANNING

Our body scanning technology uses sensors to detect body curves, shapes, sizes, and pressure points for a customized massage.



Zero Gravity: Established by NASA, this position elevates the knees above the heart, which allows the spine to decompress, provides a sense of weightlessness, and maximizes the effects of the massage rollers.

S-track: Infinity's S-track design matches the natural shape of the spine in order to hit all areas of tension and properly realign the body from the neck down to the lumbar region.

L-track: In addition to following the natural shape of the spine, the L-track covers from head to thighs, ensuring the user receives the most comprehensive massage.

Quad Rollers: Massage mechanism containing four rollers that move up and down the back.

2D Rollers: Massage roller mechanism that moves up, down, left, and right.

3D Rollers: Massage roller mechanism that moves up, down, left, right, in, and out. This type of roller allows users to adjust the depth (intensity) for either a light or deep pressure massage.

4D Technology: SA more advanced version of 3D rollers that vary the speed while moving in and out.

Inversion: Position in which the chair back reclines 180 degrees and decompresses the spine (Extension program).

Body Scan Technology: Ensures the massage rollers hit the user's unique pressure points by adjusting the position of the rollers and tailoring them to your body.

Reflexology: Replicating thumb and finger techniques of reflexology, the massage chair's foot rollers attend to vital pressure points on the feet linked to other areas of the body.